

www.ptp.or.kr

No.1 Commercialization Support Agency

PTP

POHANG TECHNOPARK

POHANG TECHNO PARK,

the best commercialization support organization that adds value to technology



We will lead **technological innovation** in our region.

Pohang is a city that led the industrial modernization of Korea in Yeongil Bay. Harnessing new growth engines of the region, Pohang Techno Park is playing its hub roles as a local industrial innovation center for a second miracle in Yeongil Bay amid various changes in industrial policies at home and abroad.

In an ever-changing industrial environment, Pohang Techno Park commercializes excellent technology and research results in response to new industrial development policies and demand from growth structures and fosters and supports new growth engine industries in the Pohang region.

In addition, we will combine science and technology with ICT by laying the foundation for regional innovation work that fits the era of the 4th Industrial Revolution. We will implement convergence among industries and create new industries, markets, and new jobs that have never existed before. We will contribute to the revitalization of the local economy by changing Pohang Techno Park into a supporting organization taking the initiative in the future industrial development of Pohang and the foundation of global enterprises in the Pohang region. Finally, I would like to ask for your continued interest and encouragement so that venture start-ups and small and medium-sized enterprises (SMEs) in the Pohang region will be able to grow into small but strong enterprises based on local technology bases. Thank you.

Lee Kang-deok, chairman of the POHANG TECHNOPARK Foundation and mayor of Pohang City

We will contribute to the revitalization of the local economy and **job creation**.

The POHANG TECHNOPARK Foundation is a major base for regional innovation that builds industrial complexes that integrate incubation, research and development, tentative production, and enterprise support services by building a cooperative system among industries, academia, research labs and the government.

The foundation not only promotes the technological advancement of main local industries and the establishment of technology-intensive companies, but also prepares for the 4th industry through the ICT/SW Convergence Promotion Center and the Advanced Biotechnology Convergence Center. It is also taking the lead in creating growth infrastructure for future strategic industries.

Looking forward, we will continue to contribute to revving up the regional economy and creating jobs by fostering regional new industries and connecting with regional organizations to support strategic technological companies. I ask you for your continued support for the foundation.

Lee Jeom sik, President of the POHANG TECHNOPARK Foundation

We present a **new vision** for a high-tech city based on advanced science

POHANG TECHNOPARK is a central organization for regional innovation that transforms a steel-based industrial structure in the Pohang area into a high-tech one that fits the era of a knowledge-based society by promoting technological innovation and the foundation of companies with excellent technology through incubation, joint research, education and training and information distribution by virtue of excellent industrial, academic and research infrastructure in the region such as POSCO, a leading global steelmaker, POSTECH and the Research Institute of Industrial Science and Technology.

History

2000

- 00.02. Permission to establish the foundation (The Ministry of Commerce, Industry and Energy)
- 00.12. Designated as an operator of an industrial technology complex (The Ministry of Commerce, Industry and Energy)

2001~2004

- 01.03. Designated as part of the Pohang Venture Start-up Promotion District (Small and Medium Business Administration)
- 02.12. Venture Building #1 completed

2005~2010

- 05.02. Support facilities completed (A dormitory building for employees of companies in Pohang Techno Park and convenience facilities)
- 05.09. Venture Building #2 completed
- 07.09. Venture Building #3 completed
- 07.12. Venture Building #4 completed

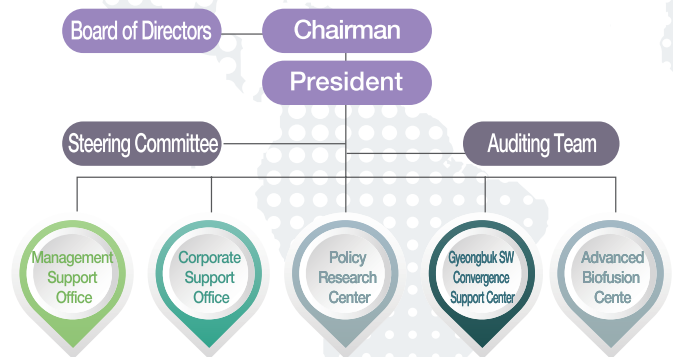
2011~2015

- 11.11. Advanced Biofusion Center opened
- 15.10. SW Convergence Cluster Kyungbuk Center opened

2016~

- 17.04. Pohang SW Support Center moved to Pohang Techno Park
- 19.03. Gyeongsangbuk-do Blockchain Center opened
- 19.07. Venture Building #5 completed

Organization



Research personnel

(Master and Doctor)

Humanities and Social Science	Business	Information technology	Science and engineering	Bio-engineering	Total
4 people	4 people	6 people	8 people	9 people	31 people



General state

■ **Date of establishment**
2000.02.28.

■ **Location**
394, Jigok-ro, Nam-gu, Pohang, Gyeongsangbuk-do

■ **Area**
187,324m²

■ **Grounds for foundation**
Article 4 of Special Act on Support for Industrial Technology Parks (Designation of Business Operators, etc.)

■ **Founding organizations**
Organized by : Pohang City, POSCO, POSTECH, the Research Institute of Industrial Science and Technology and Pohang Chamber of Commerce
Participants : 24 organizations, groups and enterprises

■ **Purpose of establishment**
To promote the technological development of local industry and the start-up of technological promising start-ups as a regional innovation base in areas such as linkage and coordination among regional innovation projects by setting up an organic cooperation system among industry, academia, research centers and the government.

■ **Characteristics**
Pohang Technopark is the only techno park privately established by local municipalities and companies among 19 technoparks across the nation

■ Main functions

Policy making: Strategies and policy proposals for mid-to long-term local industry development, developing future new growth industries and making plans for science, technology and industry

Supporting corporate growth: Fostering small but strong small companies with excellent technology and supporting the creation of jobs

Running specialization center: Fostering the 4th industry by running the Advanced Biofusion Center and the Gyeongbuk SW Convergence Promotion Center

Supporting start-ups with nice infrastructure: Building and running industrial complexes (providing spaces for start-ups, support with R&D equipment)

Mission and Vision

Mission : Contributing to regional economic development by increasing technological competitiveness of local enterprises

Vision : The best commercialization support organization that adds value to technology



Strategic goals

Contributing to revving up the regional economy and creating jobs by fostering strategic industries

Establishment of
ladder-type start-
up support
system

01

⋮

- Creation of ecosystem for foundation of start-ups in Pohang
- Development and operation of customized local venture start-up programs
- Creation of ecosystem to foster small but strong companies
- Strategic support by representative industries
- Support in full cycle of technology commercialization
- Diffusion of smart factories
- Promotion of entries into global market
- Establishment and operation of Venture Building #5

Developing local
industry
promotion policies

02

⋮

- Promotion of industrial policies led by local companies and organizations
- Establishment of regional R&BD cooperation networks
- Operation of R&BD council in Pohang area
- Plans for promising new growth engine industries

Fostering
advanced
biotechnology
industry

03

⋮

- Creation of next-generation plant-based protein material cluster
- Locating and fostering localized bio industries
- Finding and supporting promising bio companies
- Strengthening functions of specialized center and upgrading infrastructure
- Increasing capabilities for securing and analyzing fundamental bio technology
- Providing technical support and fostering research personnel

Establishment of
infrastructure for
ICT/SW
convergence
industry

04

⋮

- Advancing SW fusion cluster
- Supply core SW convergence competencies to local industry
- Establishment of network among industries, academia, and research centers to build SW ecosystem
- Supporting small but strong ICT/SW convergence enterprises in Pohang
- Commercialization/marketing support to lay foundation for start-ups' global growth
- Establishing and running SW academies

We foster small but strong companies powered by technology innovation with **customer-oriented support services**



Goals

- Promotion of technology commercialization and foundation of business based on technology
- Supporting growing companies powered by innovation and fostering small but strong enterprises

Main tasks

To foster technological start-ups to create entrepreneurial ecosystem

- Discovering technological start-ups and expanding financial support for them
- Investment in and support for funds for local start-ups
- Fostering technology venture start-ups through Pohang Associated Technology Holding Company

Discovering leading technological companies and fostering companies powered by innovative growth

- Making improvement to lease conditions for companies through expansion of support infrastructure (5 venture buildings/facilities to support plant vaccine companies)
- Support projects customized for companies and selecting/attracting companies promising technological start-ups

Strengthening base functions by developing sustainable projects in connection with local governments

- Securing global alliance base by securing bridgehead for local companies to advance into northern region
- Taking into consideration governmental support projects linked to local and central governments
- Supporting growth of strategic technological companies by setting up D/B management platform for local companies

Intensively fostering future strategy industries in Pohang and giving support to them

- Pohang-type support to grow start-ups into small but strong companies and customized support for local enterprises
- Supporting companies' export such setting up business models for overseas advancement and holding import and export fairs
- Discovering local star companies and supporting them to help them grow into strong but small global companies

Main business and support programs

- Business to support functions of industrial complexes
- Network to promote technology trade
- Fostering companies to lead strategic local industries (fostering small but strong companies)
- Support for technology transfers and commercialization
- Supporting diffusion of smart factories
- Consulting services for each stage of growth

For more information, call 054-223-2234



We nurture **high value-added** new industries by running Advanced Bioengineering Center

Goals

- Locating and fostering future new growth bio industries
- Establishment of support base for technology commercialization of local biotechnology companies and execution of base function

Main tasks

Fostering local bio industry as growth engine

- Creating of next-generation plant-based protein material cluster
- Discovering and nurturing specialized local bio industries (diseases of aquaculture animals and smart fish farms)

Discovering local biotechnology companies and playing key role in support for technology commercialization

- Discovering promising bio (food, cosmetics and pharmaceutical) companies and giving customized support to them
- Enhancing specialized center functions and infrastructure

Discovering biomaterials and securing source technology

- Strengthening research and analysis capabilities to secure fundamental biotechnology
- Giving technical support to bio companies and fostering bio researchers

Main business and support programs

- Construction of support facilities for plant vaccine enterprises
- Adding value to local bio materials
- Efficacy analysis and test
- Supporting companies with experiment equipment
- Technological consulting / guidance (consulting)
- Technical support for bio companies

For more information, call 054-223-2782



As a base organization for SW convergence in Gyeongbuk, we expedite SW convergence in the era of the **Fourth Industrial Revolution**.



Goals

- Nurture local SW industry and building ecosystem in SW industry by securing SW convergence technology in preparation for the Fourth Industrial Revolution
- Secure new growth engines and create a SW-oriented society by fostering creative talent

Main tasks

Promoting and discovering ICT/SW convergence in local strategic industries

- Secure sustainable growth engine by upgrading SW convergence cluster
- Supply core competencies of SW convergence to local industries
- Building networks among industry, academia, and research centers to build SW ecosystem

Strengthening global base for ICT/SW convergence

- Support for nurture of small but strong local companies in ICT and SW convergence
- Support for commercialization / marketing to lay groundwork for global growth
- Strengthening local companies' specialized capabilities (R&D/commercialization)

Support creative / convergent talent cultivation and create good jobs

- Establish and operate SW Academy



Main business and support programs

- SW convergence cluster business
- Support for growth of local SW companies
- Enhancement of local SW quality
- Support for commercialization of local SW convergence products
- Operation of Pohang SW Support Center
- Support for SW talent training
- Support for SW technology development
- Support for product and technology commercialization
- Helping local SW companies develop markets at home and abroad and strengthen marketing capabilities

For more information, call 054-223-2174



POHANG THECHNOPARK takes the lead in regional development with you

POHANG THECHNOPARK is securing and providing advanced equipment in order to support small and medium-sized venture start-ups' **R&D activities**

Equipment at research facilities :

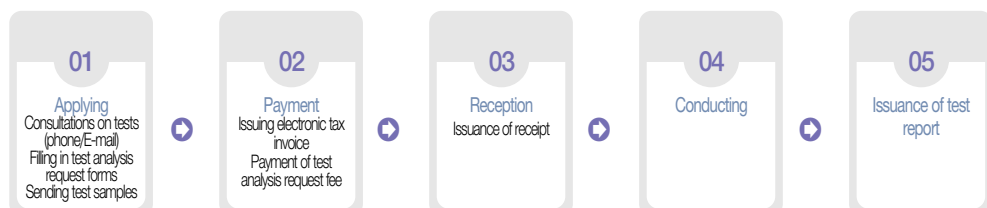
- Test analysis equipment: Trimodality imaging systems (PET / SPECT / CT) and 43 other pieces of equipment (a total of 44 pieces of equipment)
- Fuel cell verification equipment: Fuel cell simulation environment system and 20 other pieces of equipment (a total of 21 pieces of equipment)
- Smart media equipment: 28 pieces of equipment including smart advertising production studio, UHD editing equipment

Procedures for using equipment

General equipment

Application for equipment use ➡ Discussion on use period ➡ Fee calculation and imposition ➡ Use of equipment

Procedure to request test and analysis



Freely use advanced research equipment.

POHANG THECHNOPARK let small and medium-sized venture companies utilize its research equipment.

Anyone can use a variety of equipment via the National Facility and Equipment Reservation System.

ZEUS (Ministry of Science and ICT): www.zeus.go.kr E-Tube (Ministry of Trade, Industry and Energy): www.etube.re.kr

Nuclear (radiation) and cosmetics test and analysis equipment

Advanced Biolusion Center
For more information,
call 054-223-2786

Applicants : Organizations, companies or individuals that want to use equipment at the Advanced Biolusion Center
Support services : Analysis of cosmetic materials and formulations, anti-cancer efficacy, tissue analysis, efficacy analysis for central nervous system, metabolic diseases (diabetes/obesity), blood analysis, pain efficacy analysis, safety analysis, fermentation and protein separation and purification, cell image analysis, DNA and protein analysis, component analysis and separation and synthesis
Homepage: Homepage of Advanced Biolusion Center at Pohang Techno Park://www.plp.or.kr/bio/



Fuel cell test equipment

Corporate Support Room
For more information,
call 054-223-2253

Applicants : Hydrogen fuel cell companies
Support services : Long-term reliability evaluation and demonstration of 1KW-5KW PEMFC systems
Long-term reliability evaluation and demonstration of portable 200W PEMFC system
Evaluation of product performance by using environmental test facilities



Smart media

Corporate Support Room
For more information,
call 054-223-2245

Applicants : Media companies, universities and related organizations, groups and etc.
Support services : Use of smart creative studio and editing room
Utilizing VR/AR production and editing equipment
Space for one-person media enterprise (four seats in one room)
Homepage: <http://gsmc.plp.or.kr>





POHANG THECHNOPARK, an **innovation base** for areas surrounding the East Sea

Status of companies

(950 employees of 52 companies)

Business types	대 표 기 업
Advanced manufacturing (medical equipment, control equipment, etc.)	15 companies including Siemens Healthineers, Korea Houghton and CTA
Scientific/technical services (medical research and development, engineering services, etc.)	16 companies including BioApp, HLB LifeScience and DCI
Information and telecommunication (development of systems/application software, etc.)	8 companies including Hubiz ICT, AIN Technology and N System
Wholesale and retail (liquid fuels, computers and peripherals, etc.)	4 companies including Hankook Kuang-Yu, NovMetaPharma and Mirae Drone Education
Corporate support organizations and public institutions	4 organizations including Korea SMEs and Startups Agency and the Association of North East Asia Regional Governments
Other construction (power supply, electric work, etc.)	3 companies including Haedong Engineering

Leasing space: Up to 190 rooms are available

Benefit

Comfortable living environment and convenient facilities

Located in the Jigok complex with top-level residential, educational and cultural facilities in Korea

Abundant infrastructure and networks among companies, academia and research centers

Sharing information on regional innovation resources, and promoting technological exchanges with 60 research centers including POSTECH, RIST, Accelerator Research Center and Nano Technology Institute

Benefits for companies in Venture Business Promotion District

Special financial support for small and medium enterprises and special military service exemption for employees, local tax breaks, common equipment support for tests and R&D

Creating world-class business environment

The medical division of SIMENS, a global multinational company relocated to Pohang Techno Park

Lodging and other convenient facilities for employees of companies

Lodging facilities for company employees (60 households), first among techno parks in Korea, dining room, multipurpose auditorium, training room, meeting room, etc.

Perfect corporate management support system

Laying the foundation for corporate growth through systematic support programs about technology, funds, and marketing among others

Companies and organizations eligible

R&D-type companies and research institutes

- Companies that finished programs of business incubation centers at local universities and colleges and research institutes
- Excellent companies recommended by venture capital firms and organizations for venture start-ups
- Public research institutes and corporate research institutes linked to organizations in Pohang Techno Valley
- High-tech material companies, R&D specialized companies and companies with high growth potential whose growth potential was proved through various certification

Leasing space

33m² (exclusive space), 66m² (basic module) / 33m² to 264m²

More information

Infrastructure Support Team T. 054) 223-2252
 ※ For details, please visit Pohang Techno Park website and check leasing information.

Procedure

Application reception • Document review • Field inspection • Deliberation committee • Contract signing

- Download related documents: <http://www.ptp.or.kr>
 (Main page / guides about complex and tenancy / visit tenancy guide directly / tenancy guide)
- Review of application documents: Evaluation of applying companies' business feasibility by a jury of six experts

Facilities conditions

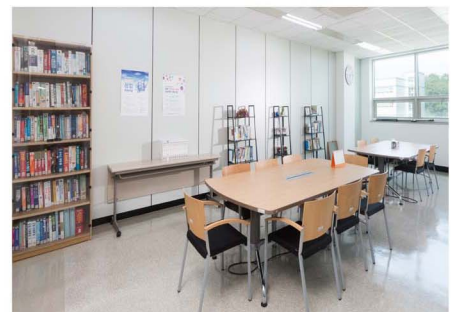
Office environment

Expansion and contraction based on modules, installation of soundproof walls, security function such as security system, hood installation, cold/hot water, 3-phase power supply

Amenities

Lounge, meeting room, video conference room, multipurpose auditorium, training room, equipment building room, publicity and exhibition room, etc.

Convenient facilities Residential facilities and restaurants



The history of high-tech science city Pohang begins at **POHANG TECHNOPARK!**





HQ Building Corporate Support Office, Policy Research Center, Management Support Room, Auditorium, Meeting Room, Lounge, Corporate Support Facility and R&D-Type Enterprises and Research Institutes
Venture Building #1 K-ICT Gyeongbuk Smart Media Center and Support Center for One Man Business



Venture Building #2
 Tentative Production Base for Venture Start-ups, R&D-Type Enterprises and Research Institutes, Tentative Production Facilities, PP Room, Clean Room, Meeting Room and Lounge
 Scale: 3 floors above ground / 6,361m²



Venture Building #3
 Support for Commercialization of New Technology, R&D-Type Enterprises and Research Institutes, Tentative Production Facilities, PP Room, Clean Room, Meeting Room and Lounge
 Scale: 1 basement floor, 3 floors above ground / 6,665m²



Venture Building #4
(Gyeongbuk SW Convergence Promotion Center)
 Pohang SW Support Center, R&D Facilities, Tentative Production Facilities, Venture Start-up Fostering Space, Meeting Room and Lounge
 Scale: 1 basement level, 3 floors above ground / 3,940m²



Advanced Biofusion Center
 Biomaterial Efficacy Verification, Technology Commercialization and Start-up Support, Video Analysis Room, Meeting Room, Laboratory and Lounge
 Scale: 1 basement floor, 3 floors above ground / 2,952m²



Venture Building #5
(SW/ICT company fostering space)
 R&D facility, Tentative Production Facility, Venture Start-up Fostering Space, Meeting Room and Lounge
 Scale: 1 basement floor, 4 floors above ground / 6,000m²



Technoville
 Company support facilities (Lodging for 60 families)
 Amenities for companies (cafeteria and cafe)
 Scale: 15 floors above ground / 4,147m²



POHANG TECHNOPARK Foundation, 394 Jigok-ro,
Nam-gu, Pohang-si, Gyeongbuk

TEL. 054) 223-2114 FAX. 054) 223-2220

www.ptp.or.kr

